

www.indiratrade.com



MONDAY

CURRENCY COMMODITIES

WEEKLY REPORT
08 OCT TO 12 OCT 2018

EDGE



INDIRA SECURITIES PVT. LTD.



WEEKLY INDICES CHANGES

INDEX	CLOSE	PREV. CLOSE	Change (%)
SENSEX	34376.99	38090.64	-9.75%
NIFTY	10316.5	11515.2	-10.41%
DOW	26447.1	26154.7	1.12%
NASDAQ	7788.45	8010.04	-2.77%
FTSE	7318.54	7304.04	0.20%
NIKKEI	23821.5	23101.5	3.12%
DAX	12111.9	12124.3	-0.10%
CAC	5359.36	5352.57	0.13%

Market Round Up:

- **Forex - U.S. Dollar Falls After Jobs Report:** - The U.S. dollar fell on Friday after the September jobs report came in lower than expected and 10-year Treasury yields rose to a seven-year high.
- The U.S. economy created less jobs than expected in September, but unemployment reached a 48-year low, indicating the economy could be plateauing.
- Nonfarm payrolls rose by 134,000 compared to expectations for a 185,000 gain.
- **Treasuries Drop on Jobs Data, Tech Selloff Resumes: Markets Wrap:** - Treasury yields rose to seven-year highs amid speculation the latest jobs report clears the path for raising interest rates. U.S. stocks headed for a second weekly decline, with technology shares under renewed pressure.
- Meanwhile, India's rupee weakened and bonds rallied after the country's central bank unexpectedly kept its policy rate unchanged. The country's benchmark stock index fell, while a gauge of emerging-market equities dropped to a 15-month low.
- Treasuries resumed a slide as investors speculated the low unemployment rate and major upward revision to prior months would do little to deter the Fed from raising rates for a fourth time this year. The hiring figures were influenced by the hurricane that hit the Southeast last month, muddling the picture.

RBI REFRANCE RATE

INDEX	CLOSE	PREV. CLOSE
USDINR	73.5809	71.8129
EURINR	84.6975	83.9771
JPYINR	64.5900	64.1900
GBPINR	95.8877	94.1553

FII FIGURES

DATE	FII FIGURES IN CRORE
01/10	-1841
02/10	-
03/10	-1550
04/10	-2760
05/10	-3370
NET	-9521

DII FIGURES

DATE	DII FIGURES IN CRORE
01/10	+1804
02/10	-
03/10	+1402
04/10	+1823
05/10	+1902
NET	+6931



DOLLAR INDEX CHART



1. **RSI:** 58.37
2. **ADX:** Indicating Sideways signal
3. **Stochastic Oscillator:** indicating Sideways signal
4. **ATR:** 1.1879
5. **Moving averages:** Pair is trading above 50 and Below 100 Day simple moving averages..

USDINR TECHNICAL CHART (INDIAN RUPEE)



- 1) **RSI:** 87.16
- 2) **ADX:** Indicating positive signal
- 3) **Stochastic Oscillator:** indicating positive signal
- 4) **ATR:** 0.8976
- 5) **Moving averages :** Pair is trading above 50 and 100 Day simple moving averages..



DOMESTIC CURRENCY

Domestic	S2	S1	PIVOT	R1	R2
USDINR	71.98	72.37	72.71	73.11	73.45
EURINR	93.57	94.29	95.35	96.07	97.13
GBPINR	63.73	64.02	64.49	64.78	65.25
JPYINR	71.98	72.37	72.71	73.11	73.45

GLOBAL CURRENCY

Global	S2	S1	PIVOT	R1	R2
DOLLAR INDEX	93.26	94.19	94.78	95.71	96.3
EURUSD	111.86	112.55	112.99	113.68	114.12
GBPUSD	1.29	1.3	1.31	1.31	1.33
USDJPY	1.15	1.15	1.17	1.18	1.19

CURRENCY PERFORMANCE

CURRENCY	CLOSE PRICE	DAY	WEEK	MONTHLY	YEARLY
EURO	1.1523	0.09%	-0.73%	-0.85%	-1.87%
POUND	1.3122	0.80%	0.72%	1.51%	0.28%
AUSTRALIAN DOLLAR	0.7051	-0.30%	-2.45%	-1.97%	-9.34%
NEWZEALAND DOLLAR	0.6441	-0.57%	-2.65%	-2.19%	-8.81%
YEN	113.7	-0.18%	0.02%	2.92%	1.04%
YUAN	6.8941	-0.02%	0.28%	0.79%	4.22%
SWISS FRANC	0.9916	0.00%	0.99%	2.74%	1.23%
CANADIAN DOLLAR	1.29645	0.32%	0.24%	-1.64%	3.09%
MEXICAN PESO	18.818	-1.46%	0.59%	-2.15%	0.80%
INDIAN RUPEE	73.765	0.20%	1.74%	2.54%	12.81%
BRAZILIAN REAL	3.8404	-0.87%	-5.12%	-5.38%	21.69%
RUSSIAN RUBBLE	66.62	-0.54%	1.59%	-3.85%	14.38%
DOLLAR INDEX	95.62	-0.13%	0.52%	0.64%	2.04%
KORREAN WON	1131.13	-0.12%	1.91%	0.13%	-1.02%
SOUTH AFRICAN RAND	14.7633	-0.66%	4.41%	-3.67%	7.03%
SINGAPORE DOLLAR	1.3826	0.14%	1.19%	0.57%	1.41%
HONGKONG DOLLAR	7.8348	0.00%	0.09%	-0.19%	0.37%

COMMODITIES

FUNDAMENTAL OF COMMODITIES

MAJOR COMMODITIES

MCX ENERGY WEEKLY

Commodity	S2	S1	Pivot	R1	R2
Crude oil- Sep	5074.3	5204.7	5280.3	5410.7	5486.3
Natural Gas-Sep	207.3	212.6	219.5	224.8	231.7

MCX BASE METAL WEEKLY

Commodity	S2	S1	Pivot	R1	R2
Copper-Nov	436.8	444.9	454.1	462.1	471.3
Zinc- Sep	178.1	182.4	184.7	188.9	191.2
Lead- Sep	138.0	141.6	146.0	149.6	154.1
Nickel- Sep	868.6	886.8	920.9	939.1	973.2

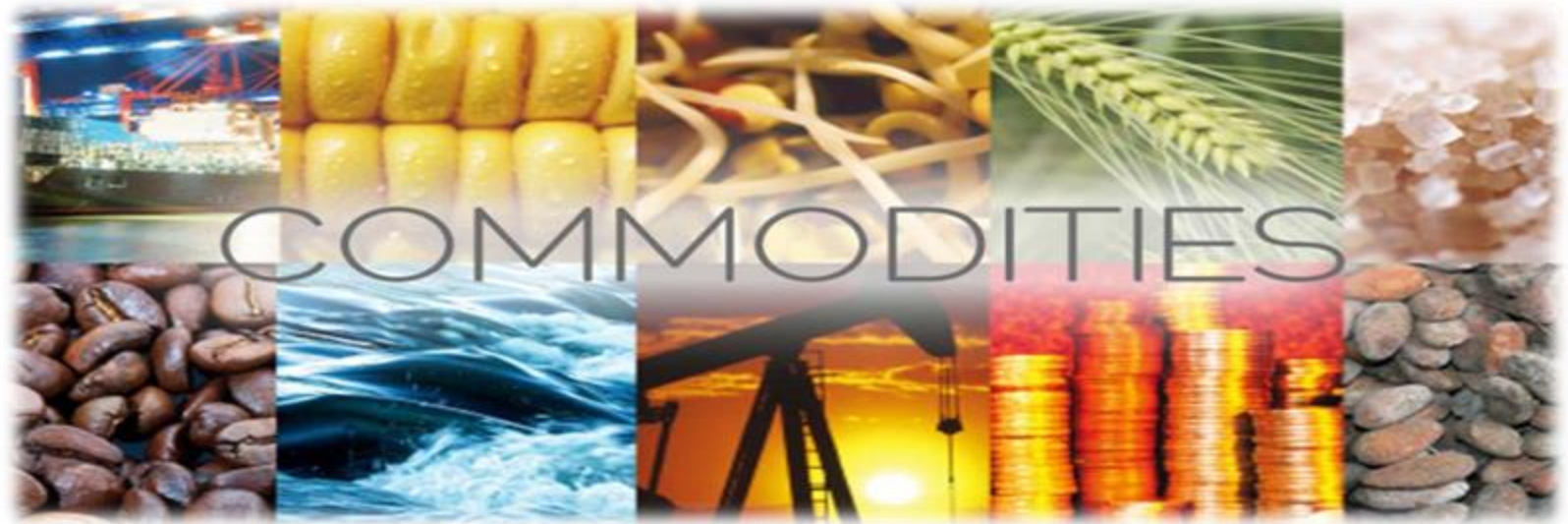
PRECIOUS METAL WEEKLY

Commodity	S2	S1	Pivot	R1	R2
Gold-Oct	29859.0	30170.0	30531.0	30842.0	31203.0
Silver-Dec	36936.3	37756.7	38195.3	39015.7	39454.3

International Commodity	S2	S1	Pivot	R1	R2	CMP	PREV CLOSE
Gold COMEX	\$1,171.47	\$1,183.73	\$1,196.27	\$1,208.53	\$1,221.07	\$1,202.00	\$1,196.00
SILVER COMEX	13.91	14.44	14.73	15.26	15.54	14.59	14.98
NYMEX CRUDE	70.12	71.68	72.71	74.27	75.3	74.33	73.25
BRENT CRUDE	77.5	79.61	81.08	83.19	84.66	84.58	81.72

Updates:

- Crude Advances as Alarm Bells Sound Over Impending Supply Crunch: - Oil headed for the longest run of weekly gains since the start of 2018 amid concern that Saudi Arabia and Russia may not pump enough crude to prevent a supply crunch as Iranian cargoes disappear from world markets.
- Futures climbed as much as 0.9 percent in New York on Friday. Prices may hit \$100 this autumn as U.S. pressure stymies exports from Iran, OPEC's No. 3 producer, according to Russian Energy Minister Alexander Novak.
- Gold Prices Rise as Dollar Falls After Jobs Report: - Gold prices rose on Friday as the greenback pared back earlier gains after September's payroll numbers came in lower than expected. The U.S. economy created fewer jobs than expected in September.



MAJOR COMMODITIES

Commodity Major	Price	Day	Weekly	Monthly	Yearly
Crude Oil	73.8189	-0.81%	1.49%	9.69%	50.78%
Brent	83.324	-1.63%	1.74%	10.01%	51.22%
Natural gas	3.1928	0.82%	4.49%	13.38%	10.94%
Gold	1198.75	-0.21%	0.90%	0.22%	-6.34%
Silver	14.5215	-0.47%	-0.07%	3.33%	-13.87%
Platinum	820.98	-0.12%	1.11%	3.82%	-10.08%
Palladium	1068.98	1.09%	-0.37%	9.75%	16.19%
Copper	2.7372	-0.85%	-1.29%	5.06%	-8.78%
Lead	1977	-0.49%	-2.26%	-1.81%	-20.83%
Aluminum	2130	-1.82%	4.93%	3.00%	-1.07%
Tin	18975	0.00%	0.66%	0.80%	-7.66%
Zinc	2635	-0.72%	5.15%	8.91%	-18.55%



MCX GOLD CHART



Commodity	S2	S1	Pivot	R1	R2
Gold	29859.0	30170.0	30531.0	30842.0	31203.0

GOLD TECHNICAL INDICATOR	
RSI(14)	BUY
STOCH(9,6)	BUY
STOCHRSI(14)	SELL
MACD(12,26)	BUY
ADX(14)	SELL
Williams %R	BUY
CCI(14)	BUY
Highs/Lows(14)	BUY
Ultimate Oscillator	BUY
ROC	BUY
BUY	7
SELL	2
NEUTRAL	0
SUMMARY	STRONG BULLISH

GOLD INTERNATIONAL CHART



Commodity	S2	S1	Pivot	R1	R2
Gold	\$1,171.5	\$1,183.7	\$1,196.3	\$1,208.5	\$1,221.1

GOLD INTERNATIONAL TECHNICAL INDICATOR	
RSI(14)	SELL
STOCH(9,6)	SELL
STOCHRSI(14)	SELL
MACD(12,26)	BUY
ADX(14)	BUY
Williams %R	NETURAL
CCI(14)	SELL
Highs/Lows(14)	BUY
Ultimate Oscillator	SELL
ROC	SELL
BUY	3
SELL	6
NEUTRAL	1
SUMMARY	MILD BEARISH



MCX SILVER CHART



Commodity	S2	S1	Pivot	R1	R2
Silver	36936.3	37756.7	38195.3	39015.7	39454.3

SILVER TECHNICAL INDICATOR

RSI(14)	BUY
STOCH(9,6)	BUY
STOCHRSI(14)	BUY
MACD(12,26)	BUY
ADX(14)	SELL
Williams %R	NETURAL
CCI(14)	BUY
Highs/Lows(14)	BUY
Ultimate Oscillator	BUY
ROC	BUY
BUY	7
SELL	1
NEUTRAL	1
SUMMARY	STRONG BULLISH

SILVER INTERNATIONAL CHART



Commodity	S2	S1	Pivot	R1	R2
Silver	\$13.9	\$14.4	\$14.7	\$15.3	\$15.5

SILVER INTERNATIONAL TECHNICAL INDICATOR

RSI(14)	SELL
STOCH(9,6)	BUY
STOCHRSI(14)	BUY
MACD(12,26)	SELL
ADX(14)	SELL
Williams %R	NETURAL
CCI(14)	SELL
Highs/Lows(14)	BUY
Ultimate Oscillator	BUY
ROC	SELL
BUY	4
SELL	5
NEUTRAL	1
SUMMARY	MILD BEARISH



MCX COPPER CHART

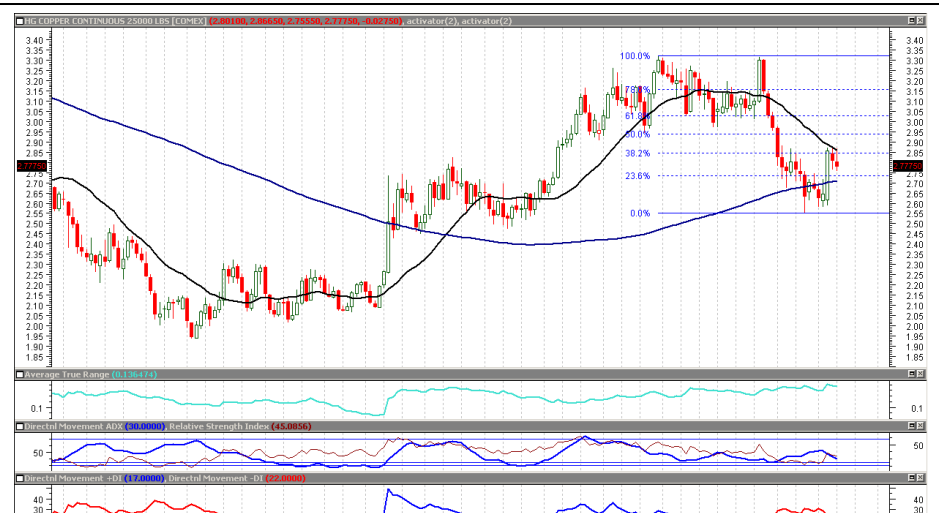


Commodity	S2	S1	Pivot	R1	R2
Copper	436.8	444.9	454.1	462.1	471.3

COPPER TECHNICAL INDICATOR

RSI(14)	BUY
STOCH(9,6)	BUY
STOCHRSI(14)	SELL
MACD(12,26)	BUY
ADX(14)	SELL
Williams %R	NETURAL
CCI(14)	BUY
Highs/Lows(14)	BUY
Ultimate Oscillator	BUY
ROC	BUY
BUY	6
SELL	2
NEUTRAL	1
SUMMARY	MILD BULLISH

COPPER INTERNATIONAL CHART



Commodity	S2	S1	Pivot	R1	R2
Copper	\$2.7	\$2.8	\$2.8	\$2.9	\$2.9

COPPER INTERNATIONAL TECHNICAL INDICATOR

RSI(14)	SELL
STOCH(9,6)	BUY
STOCHRSI(14)	SELL
MACD(12,26)	BUY
ADX(14)	SELL
Williams %R	NETURAL
CCI(14)	BUY
Highs/Lows(14)	BUY
Ultimate Oscillator	BUY
ROC	BUY
BUY	5
SELL	3
NEUTRAL	1
SUMMARY	NETURAL



MCX CRUDE CHART



Commodity	S2	S1	Pivot	R1	R2
Crude oil	5074.3	5204.7	5280.3	5410.7	5486.3

BRENT CRUDE OIL TECHNICAL INDICATOR	
RSI(14)	BUY
STOCH(9,6)	BUY
STOCHRSI(14)	BUY
M A C D(12,26)	BUY
ADX(14)	BUY
Williams %R	BUY
CCI(14)	BUY
Highs/Lows(14)	BUY
Ultimate Oscillator	BUY
ROC	BUY
BUY	9
SELL	0
NEUTRAL	0
SUMMARY	STRONG BULLISH

NYMEX CRUDE CHART



Commodity	S2	S1	Pivot	R1	R2
Crude oil	\$70.1	\$71.7	\$72.7	\$74.3	\$75.3

CRUDE.OILNYM TECHNICAL INDICATOR	
RSI(14)	BUY
STOCH(9,6)	BUY
STOCHRSI(14)	BUY
M A C D(12,26)	BUY
ADX(14)	SELL
Williams %R	NETURAL
CCI(14)	BUY
Highs/Lows(14)	BUY
Ultimate Oscillator	BUY
ROC	BUY
BUY	7
SELL	1
NEUTRAL	1
SUMMARY	STRONG BULLISH



MCX NATURAL GAS



Commodity	S2	S1	Pivot	R1	R2
Natural Gas	207.3	212.6	219.5	224.8	231.7

NATURALGAS TECHNICAL INDICATOR

RSI(14)	BUY
STOCH(9,6)	BUY
STOCHRSI(14)	BUY
MACD(12,26)	BUY
ADX(14)	SELL
Williams %R	BUY
CCI(14)	BUY
Highs/Lows(14)	BUY
Ultimate Oscillator	BUY
ROC	BUY
BUY	8
SELL	1
NEUTRAL	0
SUMMARY	STRONG BULLISH

NATURAL GAS INTERNATIONAL



Commodity	S2	S1	Pivot	R1	R2
Natural Gas	\$2.8	\$2.8	\$3.0	\$3.1	\$3.2

NATURAL GAS INTER. TECHNICAL INDICATOR

RSI(14)	BUY
STOCH(9,6)	BUY
STOCHRSI(14)	BUY
MACD(12,26)	BUY
ADX(14)	SELL
Williams %R	BUY
CCI(14)	BUY
Highs/Lows(14)	BUY
Ultimate Oscillator	BUY
ROC	BUY
BUY	8
SELL	1
NEUTRAL	0
SUMMARY	STRONG BULLISH

IMP ECONOMIC DATA TO WATCH FOR THE WEEK

DATE	TIME	CURRENCY	ECONOMIC DATA	FORECAST	PREVIOUS
MonOct 8					
TueOct 9	8:05pm	GBP	MPC Member Broadbent Speaks		
WedOct 10	6:40am	USD	FOMC Member Williams Speaks		
	2:00pm	GBP	GDP m/m	0.10%	0.30%
		GBP	Manufacturing Production m/m	0.10%	-0.20%
	2:30pm	GBP	MPC Member Haldane Speaks		
	6:00pm	USD	PPI m/m	0.20%	-0.10%
		USD	Core PPI m/m	0.20%	-0.10%
ThuOct 11	Tentative	USD	Treasury Currency Report		
	3:30am	USD	FOMC Member Bostic Speaks		
	2:00pm	GBP	BOE Credit Conditions Survey		
	4:15pm	GBP	MPC Member Vlieghe Speaks		
	5:00pm	EUR	ECB Monetary Policy Meeting Accounts		
	6:00pm	USD	CPI m/m	0.20%	0.20%
		USD	Core CPI m/m	0.20%	0.10%
	8:30pm	USD	Crude Oil Inventories		8.0M
FriOct 12	Tentative	CNY	Trade Balance		180B
	7:30pm	USD	Prelim UoM Consumer Sentiment	100.9	100.1
	10:00pm	USD	FOMC Member Bostic Speaks		
SatOct 13	8:00am	USD	FOMC Member Quarles Speaks		



204 Amardarshan Building 3rd floor Saket Nagar , Indore-452018

Call: 0731-4797170-173 Mob: +91-9303172345 / Toll Free: 18001030059 / SMS: <INDIRA> to 56070

DISCLAIMER

This report is for private circulation within the Indira Group. This report is strictly confidential and for information of the selected recipient only and may not be altered in any way, transmitted to, copied or distributed, in part or in whole, to any other person or to the media or reproduced in any form. This report should not be construed as an offer or solicitation to buy or sell any securities or any interest in securities. It does not constitute a personal recommendation or take into account the particular investment objectives, financial situations, or any such factor. The information, opinions, estimates and forecasts contained here have been obtained from, or are based upon, sources we believe to be reliable, but no representation of warranty, express or implied, is made by us to their accuracy or completeness. Opinions expressed are our current opinions as of our current opinions as of the data appearing on this material only and are subject to change without notice.

Designed by: JUGGERNAUT DESIGNERS 98260 79355